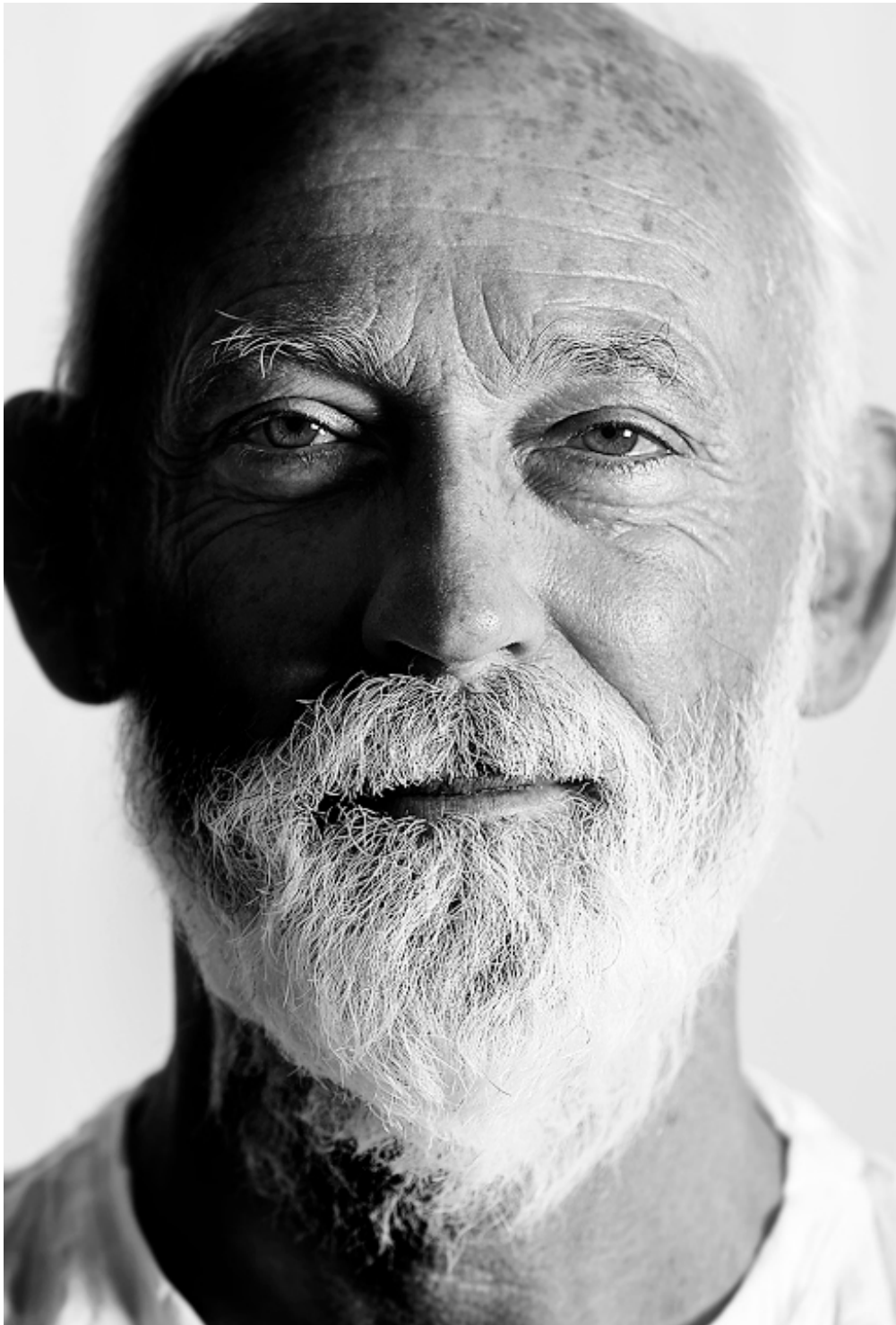




Mercury
Ross Lovegrove



ROSS LOVEGROVE

Born in Wales in 1958, Ross Lovegrove is a visionary industrial designer for whom the inherent logic and beauty of nature are paramount to any man-made object. Having designed everything from modes of transportation to furniture to human-scale electronic devices, minimal organic beauty underlies every concept.

Widely published and award-winning, Lovegrove creates beauty through the marriage of biology and object. His TED talks on the topic of “Fat-Free” organic design have been viewed over 4 million times.

REFLECTIVE

The light projected by two of Mercury's floating pebbles bounces off their biomorphic surfaces, reflecting the dynamics of natural light and movement amongst the sculptural fixture's surrounding environment.

**FOUR SEASONS HOTEL,
NEW YORK, USA**

Photo: Peter Malinowski





INGENUITY

“A ceiling fixture that places a floating assembly of large pebbles below a simple modern aluminum disc. These in turn reflect each other, bouncing light between their taught biomorphic surfaces and reflecting the environment around them. During the day, the piece acts as a sculptural object reflecting the dynamics of natural light and movement of people around them.” - *Ross Lovegrove*

**PIERRE ELLIOTT TRUDEAU
INTERNATIONAL AIRPORT,
MONTREAL, CANADA**

Photo: Caroline Bergeron





FLUIDITY

Considering Mercury is the only liquid metallic element that exists, the light fixture defies its solid metal appearance, having its elements flow lightly.

**HSBC
NEW YORK, USA**

Photo: Miro Zagnoli



**AMBASCIATORI HOTEL,
FLORENCE, ITALY**

Project: Alessandro Galloni

HARMONY

Part of the Hydro series, Mercury's design embodies the motion of water. The pebbles move in unison, bringing a modern sense of harmony and togetherness to any interior.

**NATIONAL THEATRE,
BAKU, AZERBAIJAN**

Project: Ragim Seyfullayev
Photo: Khalid Ahmadov





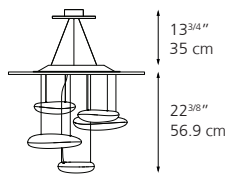
CUSTOM APPLICATIONS

A wide range of customized configurations can be dreamed of using the mercury lighting and non-lighting pebbles as the basis element of a cluster. For more information regarding custom applications, please contact your Artemide Sales Representative.

**BROWN
MONTREAL, CANADA**

Photo: Stephane Groleau

Mercury Suspension



13³/₄"
35 cm

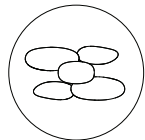
22³/₈"
56.9 cm

Standard length

Min. 37¹⁵/₁₆" - Max. 102¹⁵/₁₆"
Min. 96.4 cm - Max. 261.4 cm

Extended length

Min. 37¹⁵/₁₆" - Max. 215³/₄"
Min. 96.4 cm - Max. 548 cm



∅ 27⁹/₁₆"
∅ 70 cm

MINI LED

MATERIALS

Lighting units in die-cast aluminum.
Reflective units made of injection-molded thermoplastic.
Material with metallic finish. Reflector in stainless steel.

EMISSION

Indirect

LIGHT SOURCE

LED 29W 3000K >93CRI
or
LED 29W 2700K >93CRI

DIMMING FEATURE

Dimmable

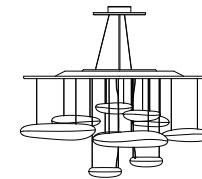
FINISH

● Stainless steel

CERTIFICATIONS

c.UL.us listed

Technical Data



19¹¹/₁₆"
50 cm

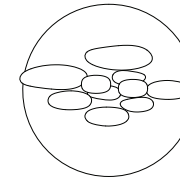
24⁷/₁₆"
62 cm

Standard length

Min. 44¹/₁₆" - Max. 103¹/₈"
Min. 112 cm - Max. 262 cm

Extended length

Min. 44¹/₁₆" - Max. 215³/₄"
Min. 112 cm - Max. 548 cm



∅ 43⁵/₁₆"
∅ 110 cm

LED

MATERIALS

Lighting units in die-cast aluminum.
Reflective units made of injection-molded thermoplastic.
Material with metallic finish. Reflector in stainless steel.

EMISSION

Indirect

LIGHT SOURCE

LED 58W 3000K >93CRI
or
LED 58W 2700K >93CRI

DIMMING FEATURE

Dimmable

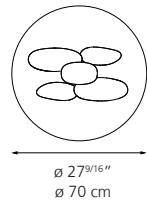
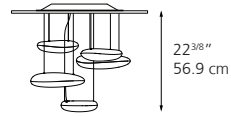
FINISH

● Stainless steel

CERTIFICATIONS

c.UL.us listed

Mercury Ceiling



MINI LED

MATERIALS Lighting units in die-cast aluminum. Reflective units made of injection-molded thermoplastic. Material with metallic finish. Reflector in stainless steel.

EMISSION Indirect

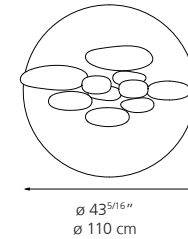
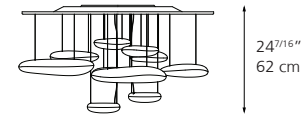
LIGHT SOURCE LED 29W 3000K >93CRI
or
LED 29W 2700K >93CRI

DIMMING FEATURE Dimmable

FINISH ● Stainless steel

CERTIFICATIONS c.UL.us listed

Technical Data



LED

MATERIALS Lighting units in die-cast aluminum. Reflective units made of injection-molded thermoplastic. Material with metallic finish. Reflector in stainless steel.

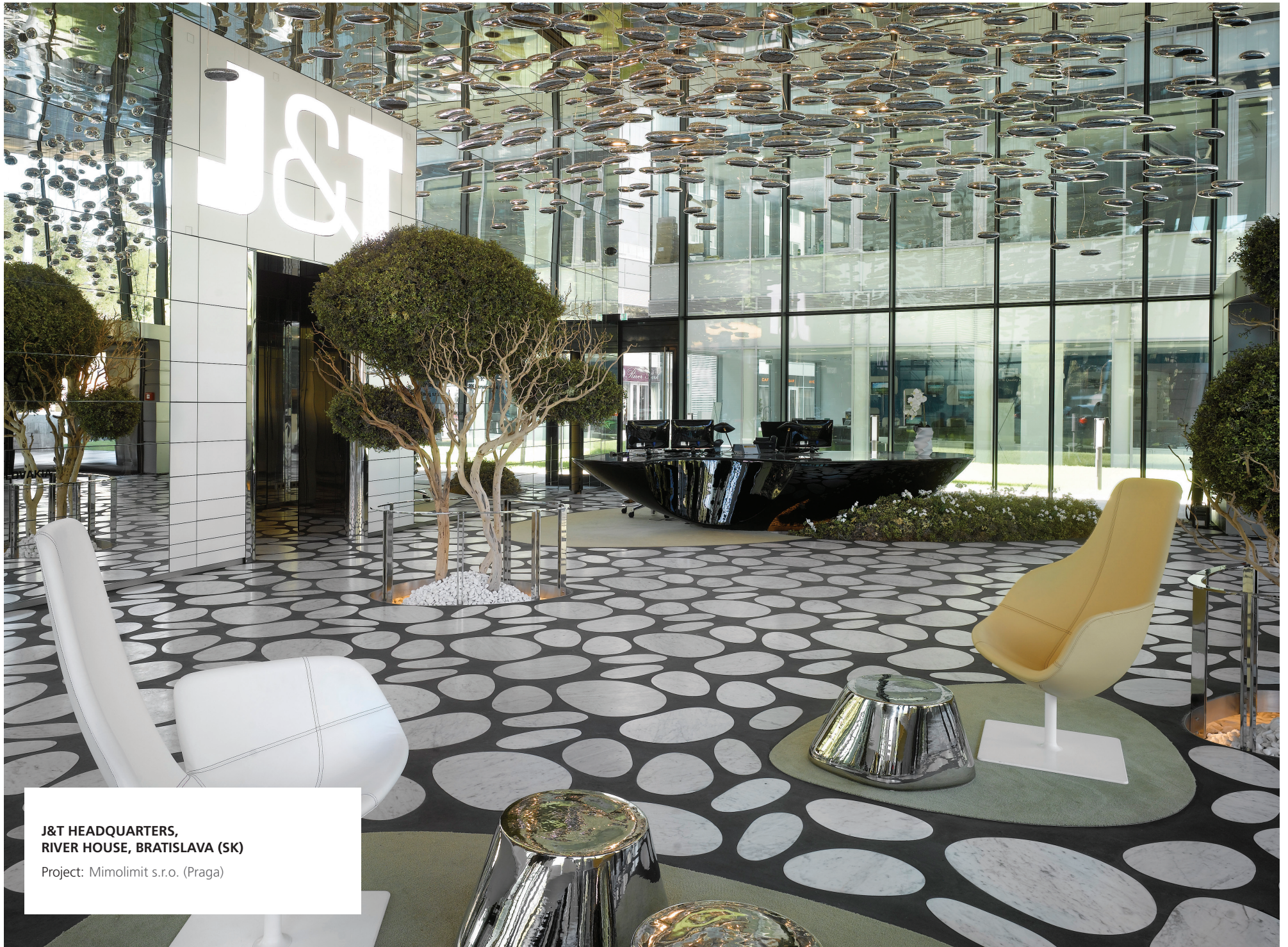
EMISSION Indirect

LIGHT SOURCE LED 58W 3000K >93CRI
or
LED 58W 2700K >93CRI

DIMMING FEATURE Dimmable

FINISH ● Stainless steel

CERTIFICATIONS c.UL.us listed



**J&T HEADQUARTERS,
RIVER HOUSE, BRATISLAVA (SK)**

Project: Mimolimit s.r.o. (Praga)

UNITED STATES HEADQUARTERS

Artemide Inc.

250 Karin Lane

Hicksville, NY 11801

T. 631-694-9292

Toll Free 1-877-Art-9111

email: infousa@artemide.net

CANADIAN HEAD OFFICE

Artemide Canada Ltd.

11105, rue Renaude Lapointe

Montréal, QC H1J 2T4

T. 514-323-6537

Toll Free 1-888-777-2783

email: infocanada@artemide.net

Artemide[®]

For retail sales contact information, please visit

www.artemide.net/store-locator

For contract sales contact information, please visit

www.artemide.net/sales-representative