

mogg

Olo

Design Antonio Facco



Olo is a family of monolithic wax-finished concrete coffee-tables. Available in ivory and anthracite colors. They are modern sculptures that suit perfectly the living area. Essential in shapes with maximum expressive force.

DIMENSIONS:

Ø — 30 cm

Ø — 50 cm

Ø — 70 cm

Ø — 100 cm

H — 61 cm

H — 47 cm

H — 33 cm

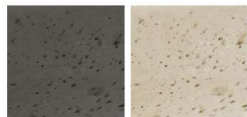
H — 15 cm

MATERIALS, COLORS AND FINISHES

MATERIALS MATCH

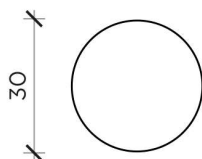
Materials can show differences in colour from one lot to another. Mogg srl declines any responsibility in the case of any colour differences for materials and does not guarantee the exact colour correspondence between this sample and the finished product. Mogg srl reserves the right to make the products and finishing the changes it deems appropriate, at any time and without notice.

Finishing

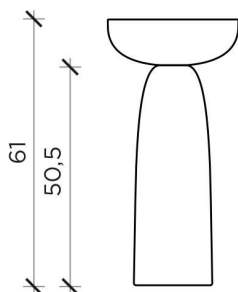


PIANTA | PLAN

OLO 30

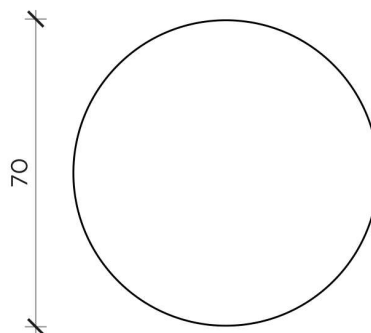


FRONTE | FRONT

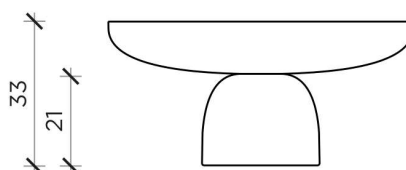


PIANTA | PLAN

OLO 70

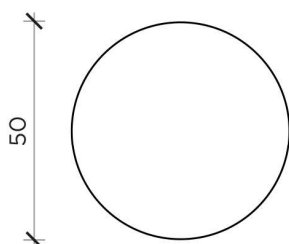


FRONTE | FRONT

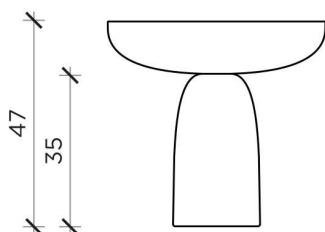


PIANTA | PLAN

OLO 50

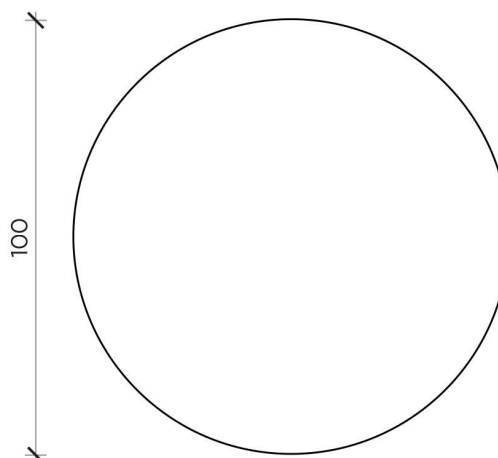


FRONTE | FRONT

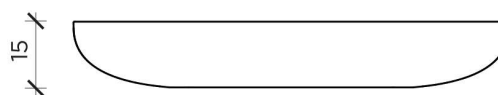


PIANTA | PLAN

OLO 100



FRONTE | FRONT



OLO

Tavolino | Coffee table

Designer: Antonio Facco
 Anno | Year: 2020
 Materiali | Materials: Tavolino in cemento | Monolithic coffee table